

Field trip to the Ronda peridotite massif during January 2011 meeting (Estepona, Southern Spain)

Left - Carlos, the field prophet, showing the way to the peridotites to his subjects

Top - Who's who ?

Field2do...

Unifying the theoretical approach of a modeller with the observations of field geologists is one of the major goals of C2P. Two options: (1) put the field geologists behind a screen of a laptop or (2) bring the modellers in the field. Our January Mid Term Review being held in Estepona, near the peridotites of the beautiful Sierra Bermeja mountains, the choice was straightforward. The great organization of Carlos Garrido and Karoly Hidas made that this day was a real success. And as Carlos said to some of the

modellers: « Now you are going to see *what* you model and be able to walk on a *real* shear zone ! »

«... you'll be able to walk on a real shear zone !»

The great view on the Alboran Sea and the smell of the pine trees were a perfect environment for continuing the group discussions that took place during our C2P - workshop. And many thanks to everybody for the great preparation of the discussion topics!

C2P on the international scene

Only 1 ½ year after the launching signal of Crystal2Plate in La Grande Motte the network has been largely present on many international meetings.

A brief overview of the contributions of C2P-members through poster or oral presentations at international meetings (apart from the many C2P-related workshops, meetings etc.) gives a glimpse on the presence of C2P on the international scientific scenery: AGU 2010 (San Francisco), EGU 2010 (Vienna), GEOMOD (Lisbon), ILP (Postdam) and most recently this year's EGU.

Forthcoming congresses with participation of Crystal2Plate members will include: the *Interrelationship between Deformation and Metamorphism in Granada (23-26 May)*, the *Gordon Research Conference Interior of the Earth in South Hadley, USA (5-10 June)*, the *Penrose Conference on Strain Localization at Cadaquès (29 June-5 July)*, the *6th Mantle Dynamics workshop at Potsdam (20-25 August)* the *Geological Society Conference Dynamic Topography in London (1-2 September)*, and the *Viscoplastic Fluids - From Theory to Application in Rio de Janeiro (6-10 November)*.

Editorial

Welcome to the first Crystal2Plate newsletter! Already two years (3 for most of the "old" crowd, 1.5 for most of the fellows) of this extraordinary experience that is Crystal2Plate. A review of these two years shows that our initial objectives were fully achieved. First, and most important, a real group synergy was built. This synergy could be strongly felt in the animated internet-based discussion that preceded the 2nd Crystal2Plate workshop in Estepona and in the lively exchanges at the posters and discussion sessions during the workshop. The hot time spent together during the various short courses last summer was certainly not lost! Great scientific results are also popping up in all projects, each a step forward in our understanding of how convection in the Earth mantle produces plate tectonics. No doubt that the next two years will be full of surprises and achievements!

Andrea Tommasi,
Scientific Coordinator

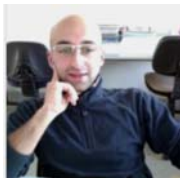
Contents

- Field2do...
- C2P on the international scene
- Portrait of the month: Robèerto !





Portrait of the month : Robèerto !



- Name: Roberto Agrusta ("Robèerto !")
- Nationality: implicit
- C2P-code name: ESR 9
- Host institution: Géosciences Montpellier (France)
- Studied at :
University of Rome, Italy (MSc.)
University of Chieti, Italy (BSc.)
- Current Research: Plume – lithosphere interactions, influence of partial melting on the erosion of the base of the lithosphere.
- Previous research: Numerical modeling of volcanic tremor (Stromboli volcano)
- Found out about C2P: heard of it from professor in Roma TRE during my studies
- Favorite expression: "èh !"
- Personal website:
<http://agrusta.altervista.org/agrusta/BENVENUTO.html>

"Reports now (over)due!"

- Progress report 2.2
- 1st periodic report
- Updated career development plan
- Next forthcoming progress report... end of August 2011!



Jenny & co (Morocco)



Erwin & Hassana (Mor.)



Kate H. & Alain (Oman)



Kate A. & co (C. Verde)

Crystal2Plate is coordinated by

Université Montpellier 2
Place E. Bataillon
34095 Montpellier cedex 5
<http://www.univ-montp2.fr>



Project website:
<http://www.gm.univ-montp2.fr/CRYSTAL2PLATE/home.html>

Project email:
crystal2plate@gm.univ-montp2.fr

Programme contacts

Coordinator:
Dr. Andréa Tommasi
Géosciences Montpellier
UMR 5243 - CC 60
Université Montpellier 2
Place E. Bataillon
34095 Montpellier cedex 5
Tel: +33 (0)4 67 14 49 12
Fax: +33 (0)4 67 14 36 03
<http://www.gm.univ-montp2.fr/spip/index.php>

Assistant Manager:
Nathalie Modjeska
Tel: +33 (0)4 67 14 37 43
Fax: +33 (0)4 67 14 42 86

This newsletter was prepared by Erwin FRETS



Universiteit Utrecht

