



## Return to Cape Verde

by Katherine Adena

In March this year, I returned to Cape Verde to collect samples and learn more about the geology of ocean islands. I was accompanying Dr Ricardo Ramalho, who completed his PhD on the Cape Verdes at Bristol a few years ago. We headed to the north of the main island (Santiago) to the town of Tarrafal. We have previously found some possible tsunami deposits there and were returning to make further observations and take some samples for cosmogenic exposure ages. No trip to Santiago is truly complete without a visit to "Darwin's Outcrop". Cape Verde was both the first and last stop on the HMS Beagle's famous voyage around the world with the Naturalist (and geologist!) Charles Darwin. He describes several outcrops near Praia (Porto Praya) and theorises about their origin. Having read the chapter on Cape Verde in Darwin's *Volcanic Islands*, it was fascinating to discover the outcrops he had examined. It helps that the coastal outcrops that he describes contain amazing examples of limestones derived from corals and probably the best pillow (submarine) lavas found anywhere in the world. I thoroughly enjoyed Santiago and was almost disappointed to travel to São Nicolau for my sampling. A short ride in the tray of a Ute to the town of Ribeira Brava (Wild River) with the island's mail was enough fun to make me forget the work. The next day, we drove to the northwest of the island and took lots of

samples. It was overcast and even rained, but I was pleased with the samples. As always, there were places that I wanted to visit – deep canyons, high mountains and windswept dunes – all for science! We were later joined by a group of



---

*« I spent the day chasing goats, trying to climb the coconut trees and sampling pillow lavas.»*

---

palaeontologists from Portugal, Spain and the USA for a day of fieldwork in the far eastern side of the island at an oasis. I spent the day chasing goats, trying to climb the coconut trees and sampling pillow lavas.

It was a quick visit to the Cape Verdes, but a very fruitful one. I have collected samples for my research as well as samples/observations for at least five other projects. However, there was horror from some in Bristol when I returned: "you didn't get a tan!"

## Editorial

The 3<sup>rd</sup> Crystal2Plate workshop in Bristol allowed for a grand start of 2012. It was *THE* place to discuss future career plans, opportunities, and strategy, a top-priority subject (just after finishing the PhD?) for most C2P fellows. However this was not its sole objective... After almost one year without a real C2P gathering (even if many of us met at various congresses during 2011), everyone had lots of new ideas and thoughts to exchange. Lively discussions started during the workshop led to a series of visits between institutions that will continue in the next months. An outline of the first exchanges can be found in the "C2P all over the place" section. This 3<sup>rd</sup> workshop also changed the "field trip" concept – visiting the Diamond synchrotron facility was a great experience! Once more we thank the Bristol crew for organizing everything. Last, but not least, hats up to Flora, Jenny, and Erwin. Their first C2P articles are out!

Andrea Tommasi,  
Scientific Coordinator

## Contents

- Return to Cape Verde
- Return to Bristol
- Newest publications
- C2P all over the place





## Return to Bristol

After a whole year without any Crystal2Plate events, the 3rd Workshop reunited the fellows once again in Bristol. As some hadn't seen each other for the whole year, everybody was keen on catching up with the others.

On the professional side, this was done through a full day of fellows' presentations and two poster sessions. With additional external researchers and the PIs contributing, everybody sure got plenty of input for the last part of their PhD.

A large part of the workshop was devoted to learning about future perspectives of Earth Science PhDs. Presentations from several Postdocs

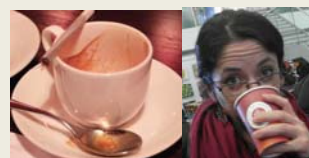
got us up to date with funding possibilities in academia, whereas the industry side was covered by representatives from Crystal2Plate's industry partners.

This year excursion took us to the Diamond synchrotron. It was very impressive (at least for me), how big a building has to be to investigate structures of atomic scale.

By taking us on a pub tour and to the Java on our last night, Kate took care of our cultural formation. We surely rocked the dance floor, battling the Bristol youth with our extraordinary dance moves. To the unsuspecting bystander, this might have looked like partying, but in fact it was serious networking.

## C2P all over the place

- Jenny gets the travel award for visiting in Orsay, Utrecht and London
- Roberto also visited in Orsay (this is apparently the place to be)
- Katherine went to a slightly warmer place: Cape Verde (see her report in this issue)



Italian vs. English breakfast



Group dinner

## Newest publications

- Bajolet, F., J. Galeano, F. Funiciello, M. Moroni, A.-M. Negredo, and C. Faccenna (2012), Continental delamination: Insights from laboratory models, *Geochim. Geophys. Geosyst.*, 13, Q02009, doi:10.1029/2011GC003896.
- Di Leo, J., Wookey, J., & Hammond, J. (2012). Deformation and mantle flow beneath the Sangihe subduction zone from seismic anisotropy. *PEPI*, 194-195, 38-54.
- Frets, E.C., Tommasi, A., Garrido, C.J., Padron-Navarta, J.A., Amri, I. & Targuisti, K. (2012) Deformation processes and rheology of pyroxenites deformed under lithospheric mantle conditions. *J. Struct. Geol.*, doi: 10.1016/j.jsg.2012.02.019

## Crystal2Plate is coordinated by

Université Montpellier 2  
Place E. Bataillon  
34095 Montpellier cedex 5  
<http://www.univ-montp2.fr>



Project website:

<http://www.gm.univ-montp2.fr/CRYSTAL2PLATE/home.html>

Project email:

[crystal2plate@gm.univ-montp2.fr](mailto:crystal2plate@gm.univ-montp2.fr)

## Programme contacts

Coordinator:

Dr. Andréa Tommasi  
Géosciences Montpellier  
UMR 5243 - CC 60  
Université Montpellier 2  
Place E. Bataillon  
34095 Montpellier cedex 5  
Tel: +33 (0)4 67 14 49 12  
Fax: +33 (0)4 67 14 36 03  
<http://www.gm.univ-montp2.fr/spip/index.php>

Assistant Manager:

Nathalie Modjeska  
Tel: +33 (0)4 67 14 37 43  
Fax: +33 (0)4 67 14 42 86

This newsletter was prepared by M. Thielmann



Universiteit Utrecht

